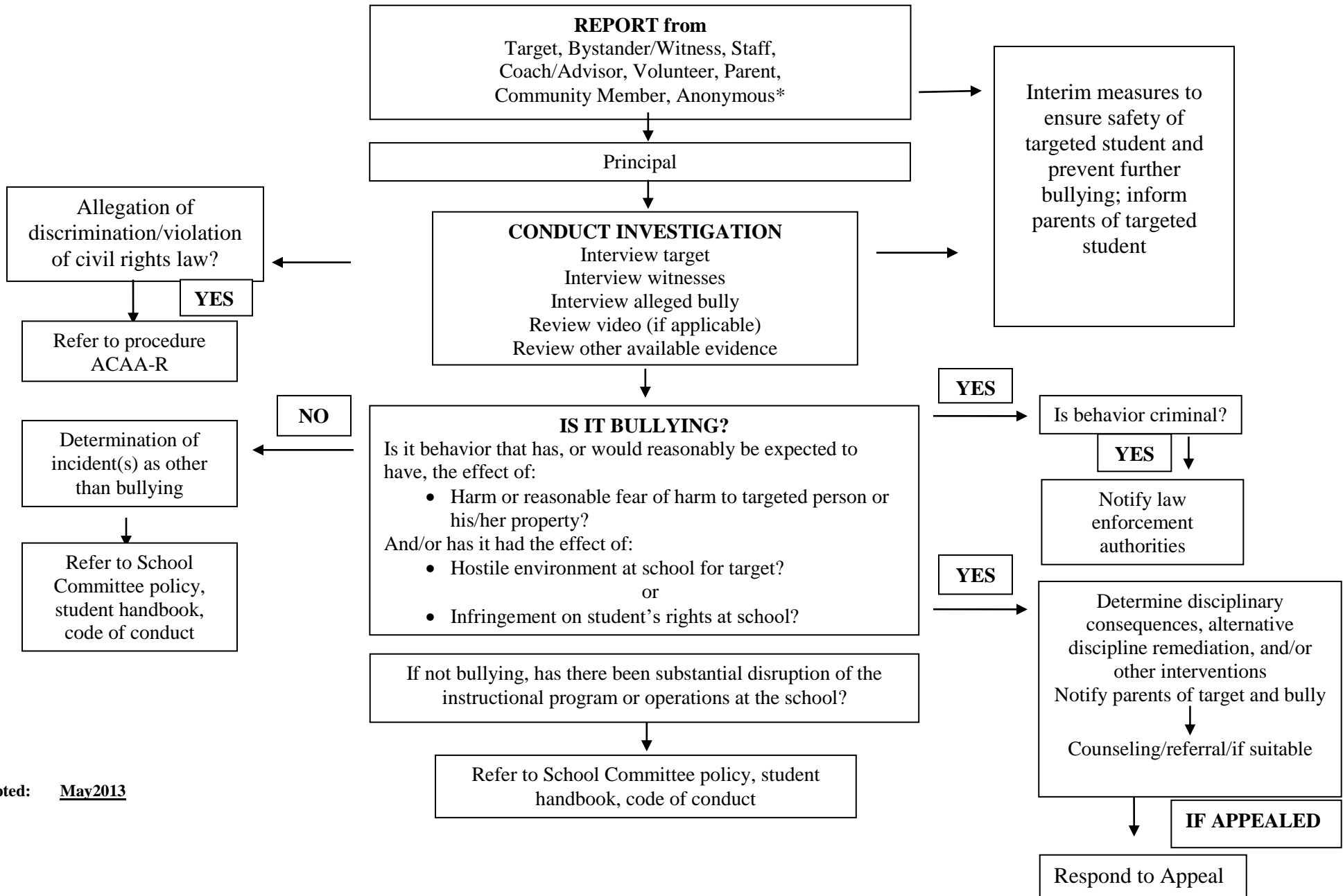


**LISBON SCHOOL DEPARTMENT
BULLYING REPORTING, INVESTIGATION AND
INTERVENTION/RESOLUTION PROCESS**



Adopted: May2013

Reviewed: May 13, 2019
Reviewed: February 13, 2023

* Exception: employee reports must be in writing to the principal and may not be made anonymously.